

SENEBOGEN

PRELIMINARY

6t TELEHANDLER INDUSTRY

360G



 123 kW /  6t /  8,5 m /  MULTICAB

Stage V

360G

The telehandler for industry. With SML power.

The intelligent, robust combination of telehandler and wheel loader, specially designed for demanding applications in the recycling industry. Developed by specialists, this machine combines the product advantages of both concepts and also offers the plus of safety through the unique, elevating cab. The SML power of our Multi Line telehandlers. Engineered and built in Germany.

Optimal power transmission
thanks to Z kinematics

360G

Multi-functional
hydraulics for a wide range of
attachments

**Hydraulically
elevating cab**
for unique visibility

Robust steel construction
for demanding applications

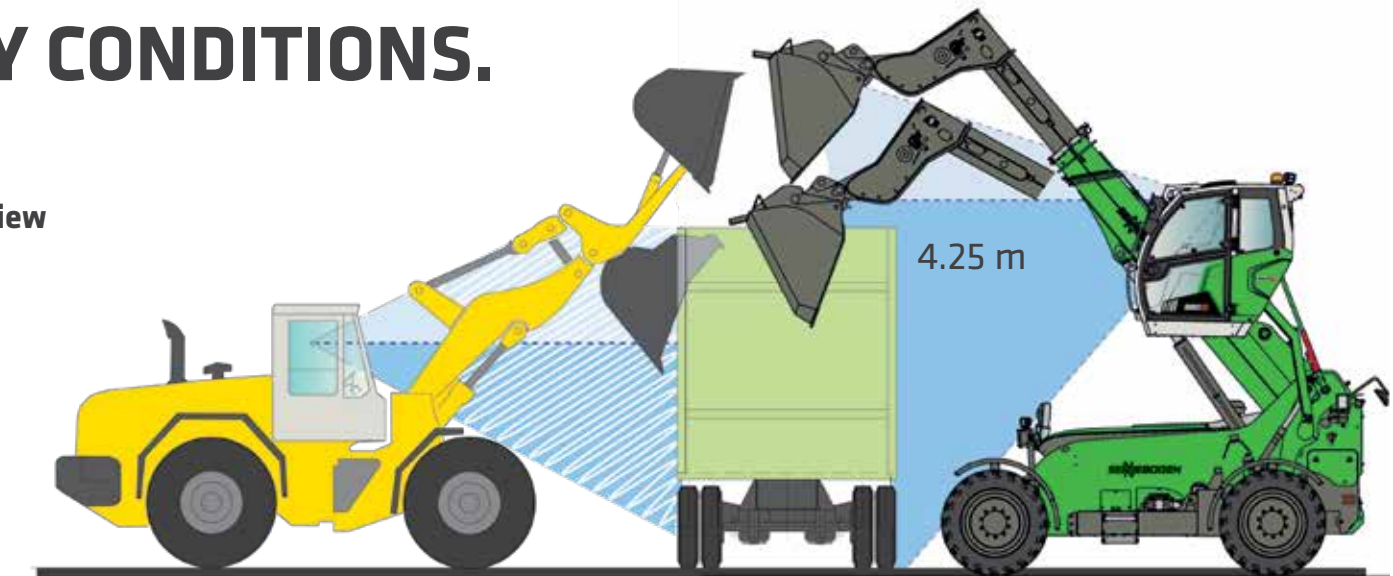
Powerful drive train
for high traction and driving speeds. Stage V
engine for high power and torque.

EVERYONE TALKS
ABOUT VISIBILITY.
WE ACTUALLY
DELIVER IT.



OPTIMAL VISIBILITY CONDITIONS.

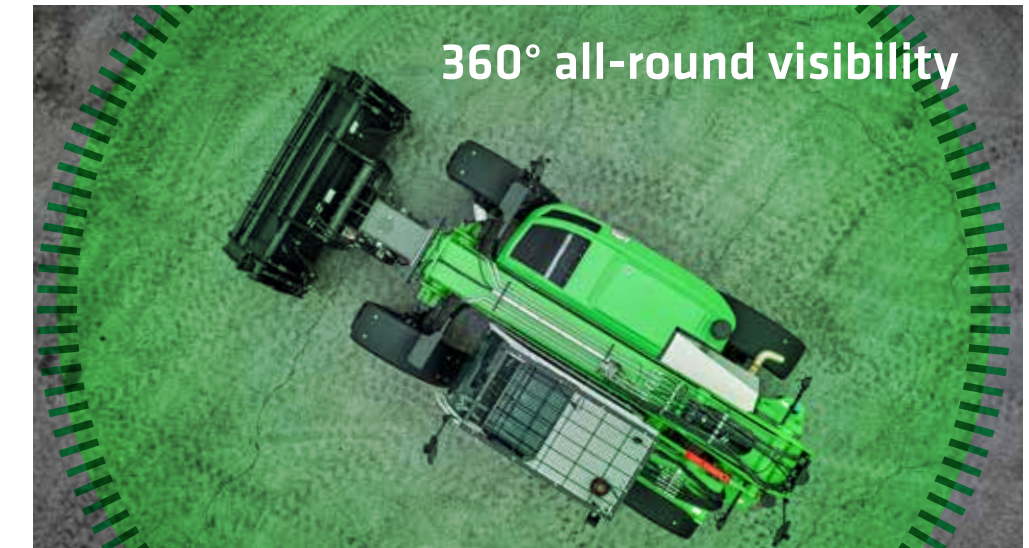
- Optimal loading process thanks to an ideal view into the truck or container provided by the elevating cab's 4.25 m viewing height
- Safety even when maneuvering
Good view of all four of the machine's tires
- Greater overview
360° panoramic view through large windows and an elevated seat position in the cabin through enlarged glass surfaces



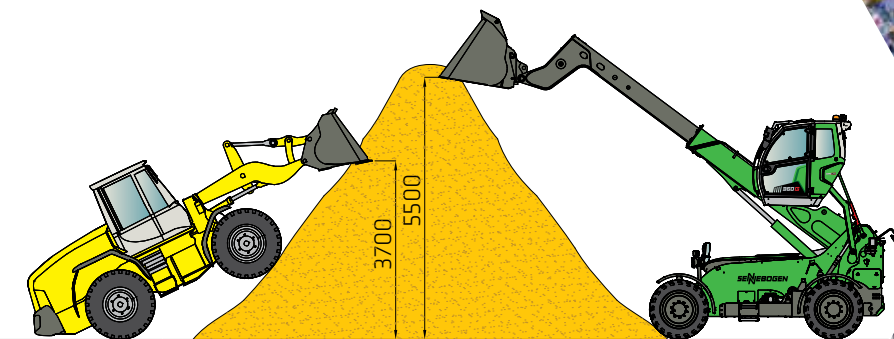
Unique:
cabin elevation



360° all-round visibility



GREATER RANGE. OPTIMAL USE OF STORAGE VOLUME.



THE SENNEBOGEN 360 G ACHIEVES AROUND 50% MORE HEIGHT IN THE DUMP.



ROBUST. DOWN TO THE LAST DETAIL.

STEEL FRAME

The machine's high-strength solid steel frame meets the most demanding service life requirements and has been optimized using the FEM (finite element method). It relishes demanding and dynamic applications. SENNEBOGEN's own steel construction experience ensures the best possible quality.

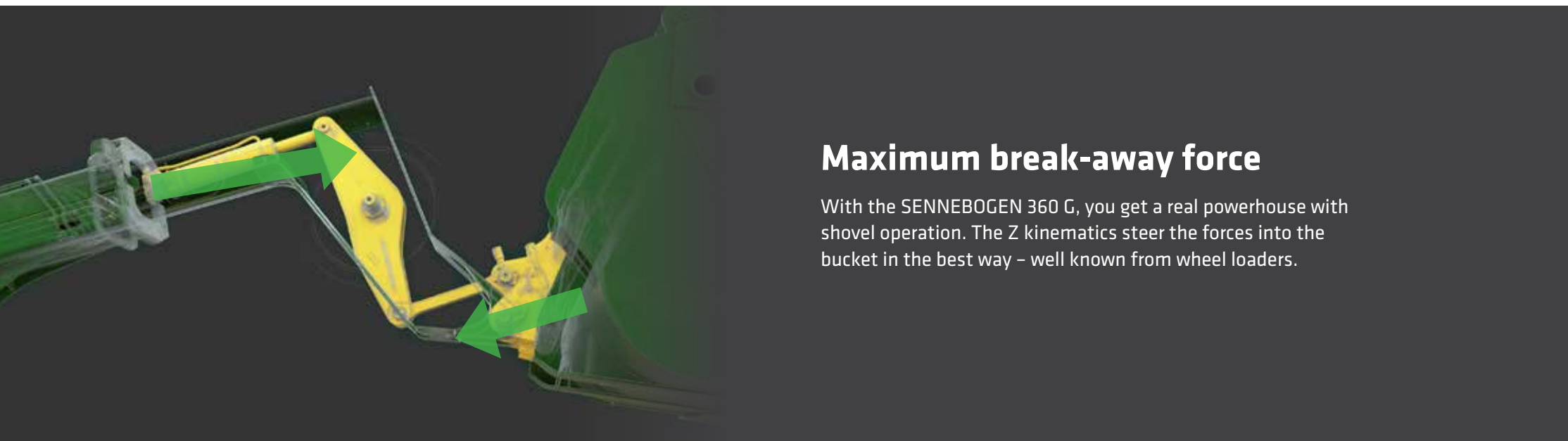
STEEL TELESCOPIC BOOM

The robust telescopic boom has been designed with state-of-the-art tools and optimized for heavy-duty applications. The central positioning and sophisticated shape of the boom optimally transfer the forces into the frame. Stress-free operation enables end position damping on both sides in the telescopic cylinder.

The central and side-guided design optimally absorbs all thrust forces and the robust frame remains dimensionally stable. The telescopic boom is located in the best possible position – with the elevating cab, the operator can always see along the boom.



THE TELEHANDLER WITH WHEEL LOADER TECHNOLOGY.

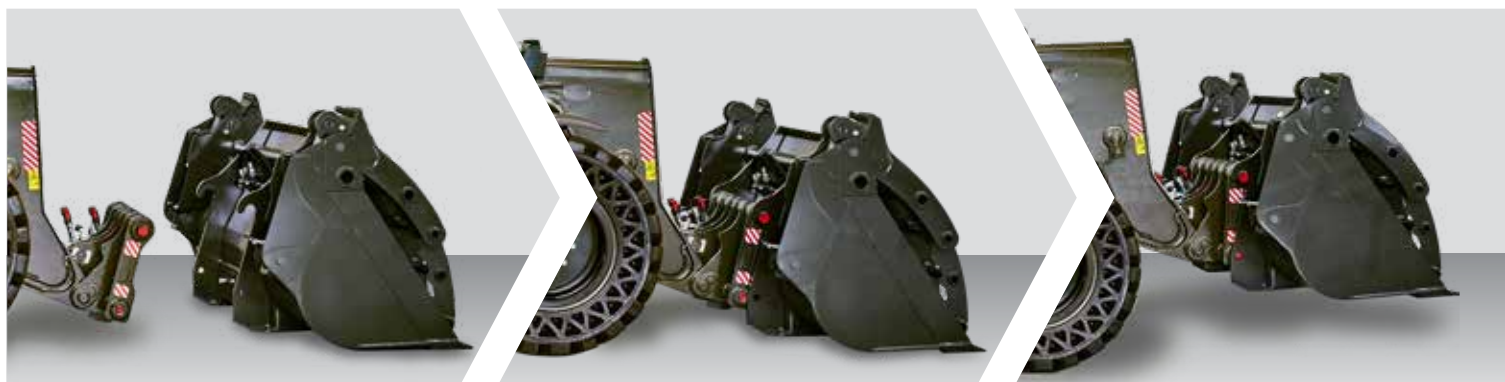


Maximum break-away force

With the SENNEBOGEN 360 G, you get a real powerhouse with shovel operation. The Z kinematics steer the forces into the bucket in the best way – well known from wheel loaders.

Tool change at the push of a button

The robust SENNEBOGEN hydraulic quick-change system perfectly complements the telehandler's Z kinematics: reinforced frame, large-scale bolts, dual-action locking cylinder – everything can be operated at the push of a button.



INCREASE IN LOADING CAPACITY IN THE CONTAINER BY COMPRESSING THE MATERIAL: UP TO 20% HIGHER LOADING VOLUME.



ALWAYS AN OPTIMAL MIX OF TRACTION FORCE AND SPEED.



ALWAYS FULL POWER.

THE POWERFUL AND CLEVER DRIVE TRAIN

The 360 G's variable travel drive always supplies generous amounts of power thanks to the combined efforts of the diesel engine and the hydraulic pumps.

The innovative control of the drive unit ensures that the drive engine provides rapid travel or high torque as required.

The system will automatically guarantee the optimal setting for fast travel, handling an uphill gradient, or picking up heavy materials.

By default, the machine travels at a maximum speed of 20 km/h. But speeds of 40 km/h are no problem for the powerful unit.



MAXIMUM DRIVING DYNAMICS AND LOW CONSUMPTION

- Robust and durable with reinforced HD axles for industrial use
- High speed as well as tensile and pushing force for fast work cycles
- Low operating costs thanks to engine speed reduction at maximum driving speed

AIR
CONDITIONING
IN SERIES

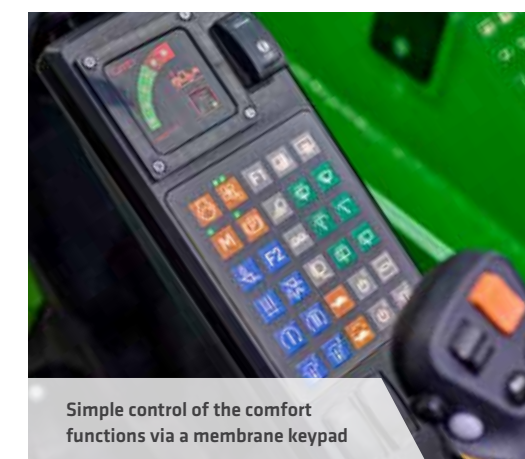
MULTICAB

NEW OPERATING CONCEPT.

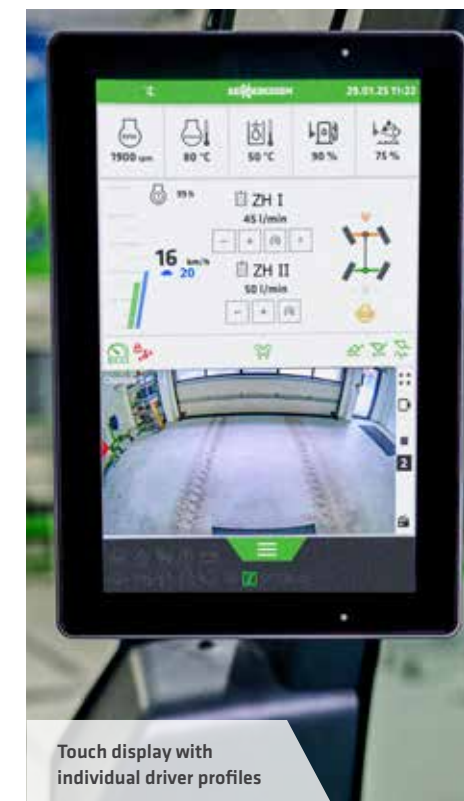
Our comfortable driver's cab allows for concentrated and relaxed work through an operating concept that adapts individually to the driver. A central touch display replaces conventional toggle switches and allows intuitive settings according to personal preferences. Protected from noise and vibrations, the driver can fully concentrate on his work. The excellent view and ergonomically arranged, co-swinging controls ensure an optimal working environment. Numerous storage options, modern connections (USB, 12 V, 24 V) and the standard air conditioning system make working a personal comfort experience.



Comfortable footswitches for infinitely variable cab height adjustment



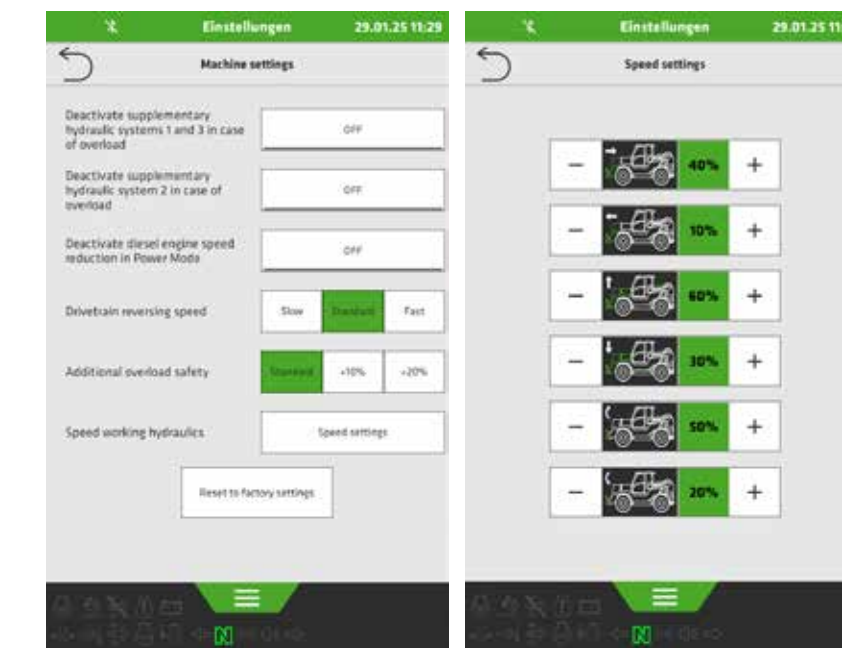
Simple control of the comfort functions via a membrane keypad



Touch display with individual driver profiles

10-INCH TOUCH DISPLAY.

QUICKEST ACCESS TO ALL IMPORTANT FEATURES



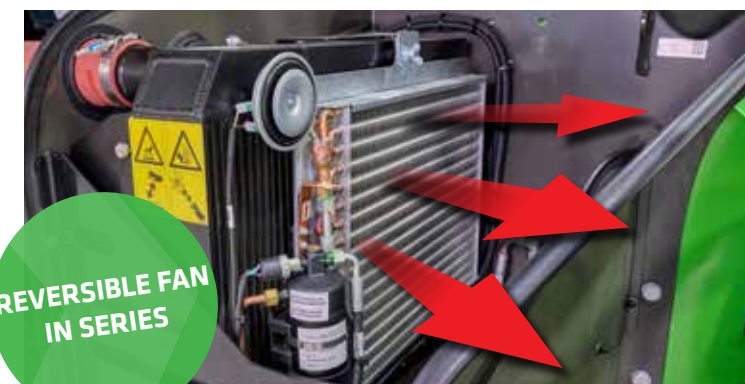
Adjust machine settings quickly and easily

Speed settings for the most important work functions

SOPHISTICATED TECHNOLOGY. ALWAYS RELIABLE.



SOPHISTICATED DOWN TO THE LAST DETAIL



The SENNEBOGEN 360 G always works productively. The powerful reversible fan comes as standard and reliably ensures free air intake and thus optimal cooling performance, even in the most adverse conditions.



Working with fewer refueling stops: Thanks to the economical consumption and the large diesel tank, the 360 G keeps you moving for longer, even in multi-shift operations.

DESIGNED FOR HEAVY DUTY CONTINUOUS USE.



TECHNICAL DATA, EQUIPMENT

OPERATING DATA

OPERATING WEIGHT ¹	12.500 kg
STACKING HEIGHT	8.500 mm
MAX. LOAD CAPACITY (LSP 600 MM)	6.000 kg
MAX. LOAD CAPACITY AT MAX. HEIGHT	6.000 kg
MAX. LOAD CAPACITY AT MAX. REACH	2.200 kg
MAX. TRAVEL SPEED	20/30/40 km/h
TENSILE FORCE ²	91 kN
BREAK-AWAY FORCE ON THE SHOVEL ³	85 kN

DIESEL ENGINE

TYPE	Stage V Cummins B4.5-C165 FR95723 Nominal engine power: 123 kW / 2.200 rpm Standard operating point: 123 kW / 2.200 rpm ECO operating point: 111 kW / 1.500 rpm
EXHAUST AFTERTREATMENT	DOC + SCR + DPF
DISPLACEMENT	4.5 l
MAX. TORQUE	763 Nm
ENGINE OIL	SENIube ENGINE LONGLIFE 5W-30-LA

TANK CAPACITIES

DIESEL TANK	160 l
HYDRAULIC OIL TANK	140 l
SCR TANK	16 l

HYDRAULIC SYSTEM

OPERATING PUMP	Load sensing axial piston variable displacement pump
OUTPUT	200 l/min
WORKING PRESSURE	310 bar
OUTPUT ZH1 ⁴	up to 180 l/min
LIFTING	7 s
LOWERING	6 s
TELESCOPE OUT	5.5 s
TELESCOPE IN	5.5 s
TILT OUT	3 s
TILT IN	3 s

POWER TRANSMISSION

STEERING ANGLE	36°
DIFFERENTIAL LOCK	100 % selectable on the rear axle
SERVICE BRAKE	internal hydraulically operated brake
PARKING BRAKE	hydraulically operated spring-loaded cylinder

1) in line with ISO 6016 (weight of the machine with all standard equipment, without a load, with a full fuel tank, with other liquid tanks full [water, hydraulic oil, brake fluid] and the weight of the operator [75 kg ± 3 kg])

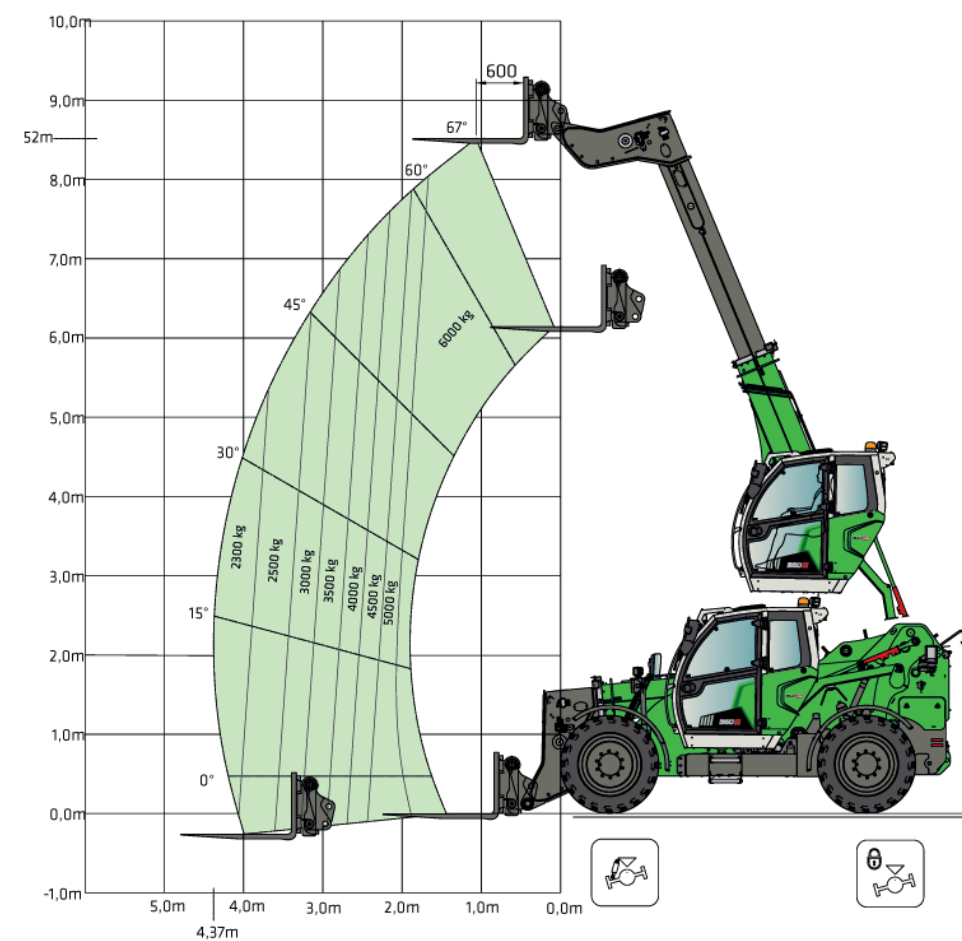
2) depending on machine version

3) calculated

4) ZH = auxiliary hydraulics

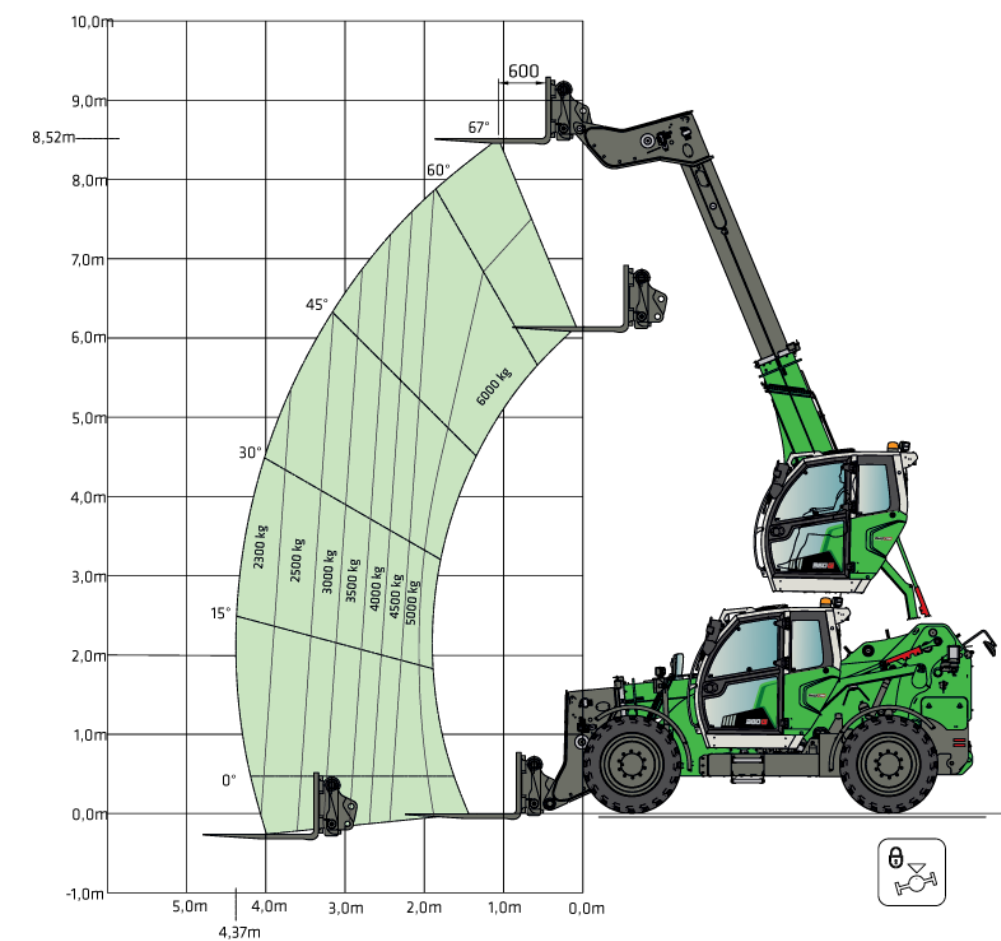
LOAD RATINGS AND OPERATIONAL RANGE

Operation with lifting fork / with oscillating axle interlock / with level compensation



All values according to the safety standard DIN EN 1459 / DIN ISO 22915-14. They apply to the SENNEBOGEN standard lifting fork with a deviation of max. +/- 5° to horizontal.

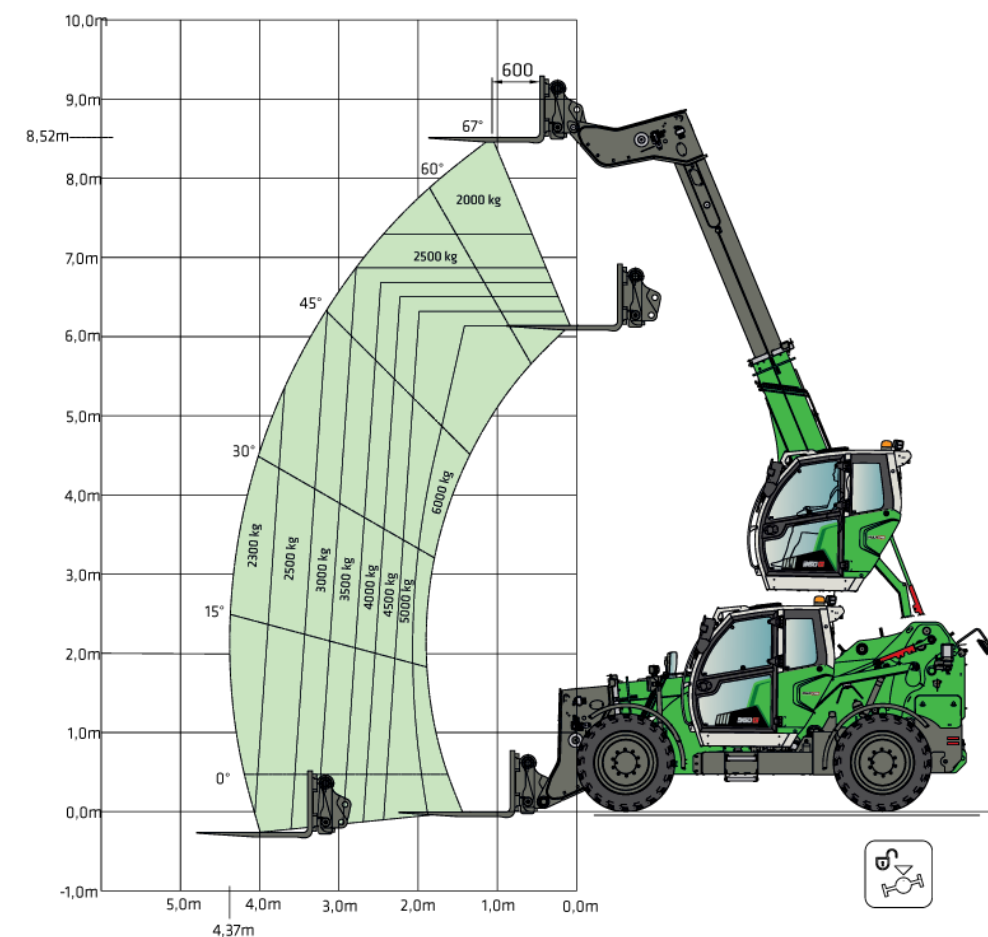
Operation with lifting fork / with oscillating axle interlock



All values according to the safety standard DIN EN 1459 / DIN ISO 22915-14. They apply to the SENNEBOGEN standard lifting fork with a deviation of max. +/- 5° to horizontal.

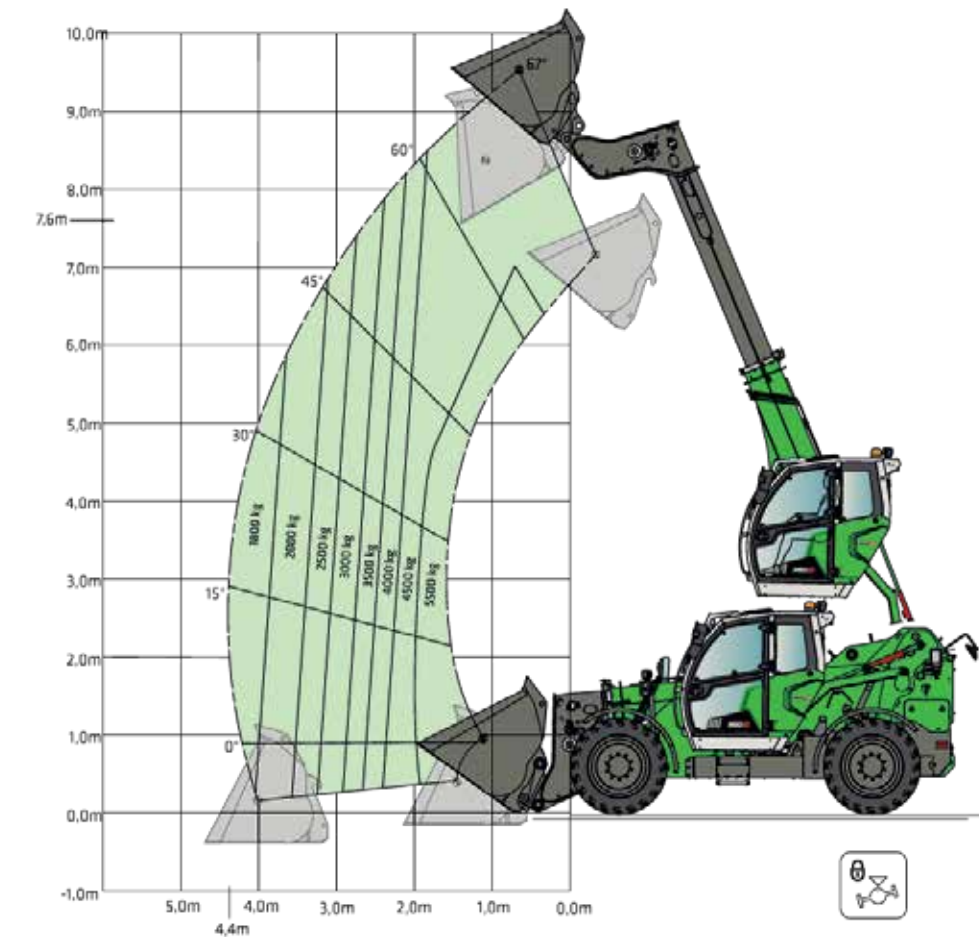
LOAD RATINGS AND OPERATIONAL RANGE

Operation with lifting fork / without oscillating axle interlock



All values according to the safety standard DIN EN 1459 / DIN ISO 22915-14.
They apply to the SENNEBOGEN standard lifting fork with a deviation of max. +/- 5° to horizontal.

Operation with shovel / with oscillating axle interlock



The specified load capacities only apply to the use of the SENNEBOGEN loading shovel with 2 m³ loading volume.
The permissible bulk material densities must be taken into account. The dead weight of the shovel is included in the payload.
Payloads should be moved in the transport position with the boom retracted and lowered.

STANDARD EQUIPMENT AND OPTIONAL EXTRAS

BASIC MODEL

- 360 G - SENNEBOGEN G-series telehandler (Stage V) 123 kW ●
- Pre-separator for air filter, coarse particle degree of separation approx. 98 % ○
- Reversible fan ●

TIRES

- 400/70 R24 Multimax MP 527 multi-purpose profile ●
- 500/70 R 24 Nokian TRI 2 Steel ○
- 375/85 24 Camso MPT solid rubber tires ○
- VSDL D2A 15,5 R25 Bridgestone ○

EQUIPMENT

- Lifting fork ○
- Tine adjustment device with side thrust ○
- 1.6 m³ soil shovel with and without teeth for bulk material density up to 1.800 kg/m³ ○
- 3.5 m³ bulk bucket for bulk material density up to 1.000 kg/m³ ○
- 4.0 m³ bulk bucket for bulk material density up to 900 kg/m³ ○
- 5.0 m³ bulk bucket for bulk material density up to 700 kg/m³ ○

● standard ○ optional

- 2.5 m³ loading shovel for bulk material density up to 1.200 kg/m³ ○
- 3.0 m³ loading shovel for bulk material density up to 1.100 kg/m³ ○
- 2.5 m³ loading shovel with hydr. grab for bulk material density up to 1.400 kg/m³ ○
- 3.0 m³ loading shovel with hydr. grab for bulk material density up to 1.000 kg/m³ ○

DRIVE AND STEERING

- Standard heavy-duty axle up to 33 km/h ●
- Optional high-speed axle for up to 40 km/h ○
- Level compensation for high-speed axle ○
- Continuously variable travel drive 20 km/h ●
- Continuously variable travel drive 40 km/h ○
- Crawling function and speed limiter ○
- Oscillating axle interlock, rear axle ○

TRAILER OPERATION

- Shunting coupler 9 t with manual coupling ●
- Tow bar with automatic coupling; height-adjustable ○
- Compressed air brake system for towing operation ○
- Socket, 7-pin, rear, for trailer operation ○

OPERATOR'S CAB AND EQUIPMENT

MULTICAB

- SENNEBOGEN Multicab IV Comfort operator's cab with roller sunblind for roof and windscreen, interior as well as windshield washing system at the front, on the roof and at the rear ●
- Seat belt / 2 inches ●
- Air-suspended comfort operator's seat with seat heating ●
- Cab windscreen with safety glazing ●
- Cab windshield with bullet proof glass ○
- Hammer glass safety glazing for left and right cab windows incl. door ○
- Skylight with safety glazing ●
- Bulletproof glass in skylight ○
- FOPS protective guard (Stage 2) ○
- Radio / USB, DAB, MP3, Bluetooth ○
- Activated carbon filter for Multicab IV, 5 filter kits supplied loose ○
- Hand-held fire extinguisher type PD6 (1 unit) ○
- Cab lift memory function ○
- Operation of the cabin lift via buttons on the control panel ○
- Automatic switch-off of diesel engine via seat contact switch ○

STANDARD EQUIPMENT AND OPTIONAL EXTRAS

ADDITIONAL EQUIPMENT

Electric engine preheating 230 V incl. socket	<input type="radio"/>
Electric heater for hydraulic tank, 230 V	<input type="radio"/>
Pre-separator for air filter, coarse particle degree of separation approx. 98 %	<input type="radio"/>
Mirrors on right and rear	<input checked="" type="radio"/>
Camera system - basic package with 1 camera	<input type="radio"/>
Camera system - Premium package with 2 cameras (at the rear and on the driver's side)	<input type="radio"/>
Camera system with person detection	<input type="radio"/>
Central lubricating bar, easily accessible	<input type="radio"/>
Automatic central lubrication system	<input type="radio"/>

HYDRAULIC OIL FILLING

Hydraulic oil SENlube HYDRO D46	<input checked="" type="radio"/>
Bio oil filling (PANOLIN HLP Synth 46)	<input type="radio"/>
Hydraulic oil SENlube HYDRO POLAR (low temperature oil)	<input type="radio"/>

OPERATING MATERIALS WITHOUT HYDRAULIC OIL FILLING

Standard operating materials	<input checked="" type="radio"/>
Low temperature operating materials	<input type="radio"/>

● standard ○ optional

* ZH = auxiliary hydraulics

EQUIPMENT

Boom damping	<input type="radio"/>
Dirt scraper for telescopic arm	<input type="radio"/>

ADDITIONAL FUNCTIONS FOR EQUIPMENT

Continuous operation ZH1/ZH3*	<input type="radio"/>
Continuous operation ZH2*	<input type="radio"/>
ZH3 Auxiliary hydraulic circuit on boom head*	<input type="radio"/>
ZH2 auxiliary hydraulic circuit at the rear*	<input type="radio"/>
Automatic shovel return	<input type="radio"/>
Socket for front attachments, 7-pin	<input type="radio"/>

LIGHTING AND TRAVEL ALERTS

2 LED lights on the basic boom	<input type="radio"/>
All-round lighting package (incl. StVZO lighting)	<input type="radio"/>
1 flashing light on the cab	<input type="radio"/>
Headlight protective guard, front	<input type="radio"/>

QUICK-CHANGE SYSTEM

SENNEBOGEN quick-change device – hydraulic	<input checked="" type="radio"/>
KRAMER quick-change device	<input type="radio"/>
JCB quick-change device	<input type="radio"/>
Manitou quick-change device	<input type="radio"/>
Volvo quick-change device	<input type="radio"/>

PAINT FINISH / COATING

Standard paint RAL 6018 Green / RAL 7038 Light gray / RAL 7022 Gray	<input checked="" type="radio"/>
Special paint finish (1 color) in RAL color	<input type="radio"/>
Special paint finish for Multicab only in RAL color	<input type="radio"/>

SENTRACK TELEMETRY SYSTEM

SENtrack telemetry system including connection fees	<input checked="" type="radio"/>
---	----------------------------------

POWERFUL WORK HYDRAULICS.

POWERFUL DRIVE, ECONOMICAL CONSUMPTION

Each work function always receives the hydraulic power it requires to operate optimally. Instantaneous signal processing between joystick and main control block ensures sensitive and responsive operation for all the machine's hydraulic functions.

In addition to the main functions – the lift cylinder, tilt cylinder, telescopic cylinder and the elevating cab – the work hydraulics also control the additional hydraulic connections just as effectively.

EQUIPPED FOR MANY USES



Image shows ZH1 and ZH3

Auxiliary hydraulics 1 (ZH1)

For quick and easy connection of attachments (standard)

SHORTER CYCLE TIMES, BETTER MATERIAL HANDLING PERFORMANCE GUARANTEED

- Maximum hydraulic power for required work functions
- Optimized speed for telescoping the boom, lifting the telescopic arm and driving dynamics

SHOVELS

With SENNEBOGEN shovels, you get attachments specially optimized for our telehandler, which match the machine's high quality standards.

Our shovels are designed for the tough working conditions of the recycling industry. The robust design with highly wear-resistant materials and hardened components, and the shape and center of gravity optimization, offer ideal conditions for long-term continuous loads.

Unleash the full potential of our telehandler with SENNEBOGEN shovels:

- Utilization of maximum break-away force and payload
- Lower fuel consumption
- Reduced drive train load
- Shorter loading cycles
- Greater working comfort and safety with the hold-down shovel



SOIL SHOVEL

1.6 m³ with and without teeth

Bulk material density: up to 1.8 t/m³

Shovel weight: approx. 610 kg



LOADING SHOVEL

2.5 m³ for bulk material density up to 1.2 t/m³
(shovel weight: approx. 870 kg)

3.0 m³ for bulk material density up to 1.1 t/m³
(shovel weight: approx. 960 kg)



HOLD-DOWN SHOVEL

2.5 m³ incl. reversible blade bolted to underside for bulk material-density up to 1.4 t/m³ (shovel weight: approx. 1.480 kg)

3.0 m³ incl. reversible blade bolted to underside for bulk material-density up to 1.0 t/m³ (shovel weight: approx. 1.560 kg)



LIGHT-GOODS SHOVEL

3.5 m³ for bulk material density up to 1.0 t/m³ (shovel weight: approx. 840 kg)

4.0 m³ for bulk material density up to 0.9 t/m³ (shovel weight: approx. 920 kg)

5.0 m³ for bulk material density up to 0.7 t/m³ (shovel width: approx. 3000 mm)

Subject to technical changes. Additional options available upon request.

TIRES

No matter what application, it's the ground that forms the contact surface with the machine. Therefore, only the right tires can provide optimum safety.

We will provide you with the best tires for your application. Rely on our experience and get advice on achieving the best performance, safety and service life.



Subject to technical changes. Additional options available upon request.



STANDARD

CAMSO MPT 753
460/70-24

Universal tire with good traction and balanced handling



INDUSTRY

NOKIAN TRI 2 STEEL
500/70 R24

MPT steel reinforced profile for industrial and recycling plants



OFFROAD

15.5 R25 BRIDGESTONE
VSDL D2A

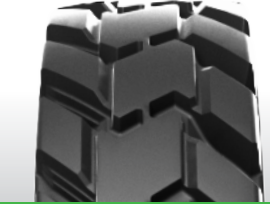
Extremely robust L5 pneumatic tires for maximum protection, e.g. in scrap yards, quarries or for tough recycling applications



CONSTRUCTION SITE

MICHELIN BIBLOAD
500/70 R 24

Radial, for construction sites and aggressive surfaces, comfort tires, smooth running



RECYCLING

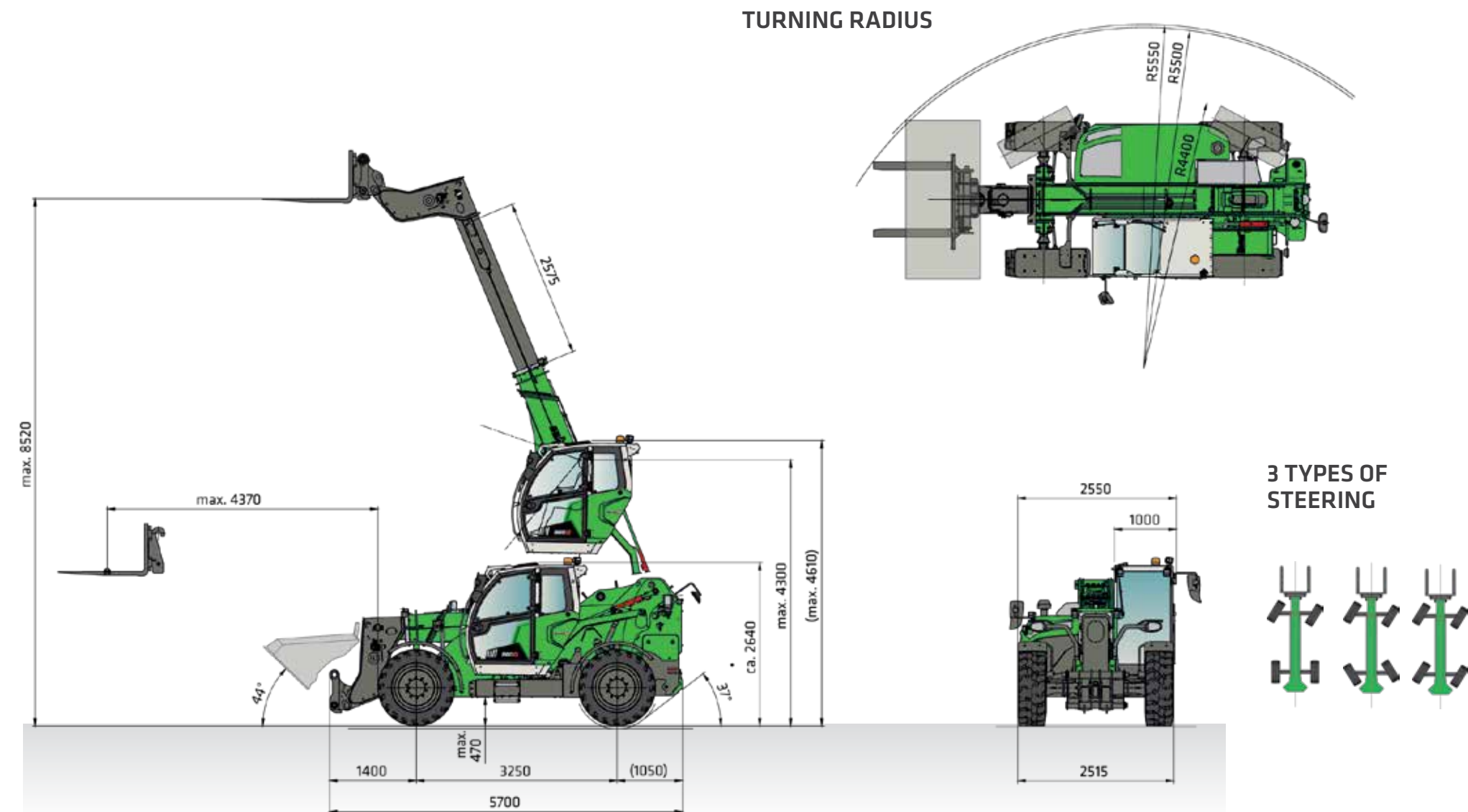
CAMSO MPT 793S
375/85-24

Solid rubber tires
12.00-24. Width approx. 300 mm

LONG WHEELBASE.
HIGH STABILITY.



DIMENSIONS



YOUR MACHINE. MULTI-FUNCTIONAL.

The SENNEBOGEN 360 G is a true all-rounder. In addition to suitable shovels and mechanical or hydraulic pallet forks, it can also operate many other attachments.

With the auxiliary hydraulics and the electrical connection a wide range of useful tools can be operated safely and with sufficient power.

QUICK-CHANGE
IN SERIES

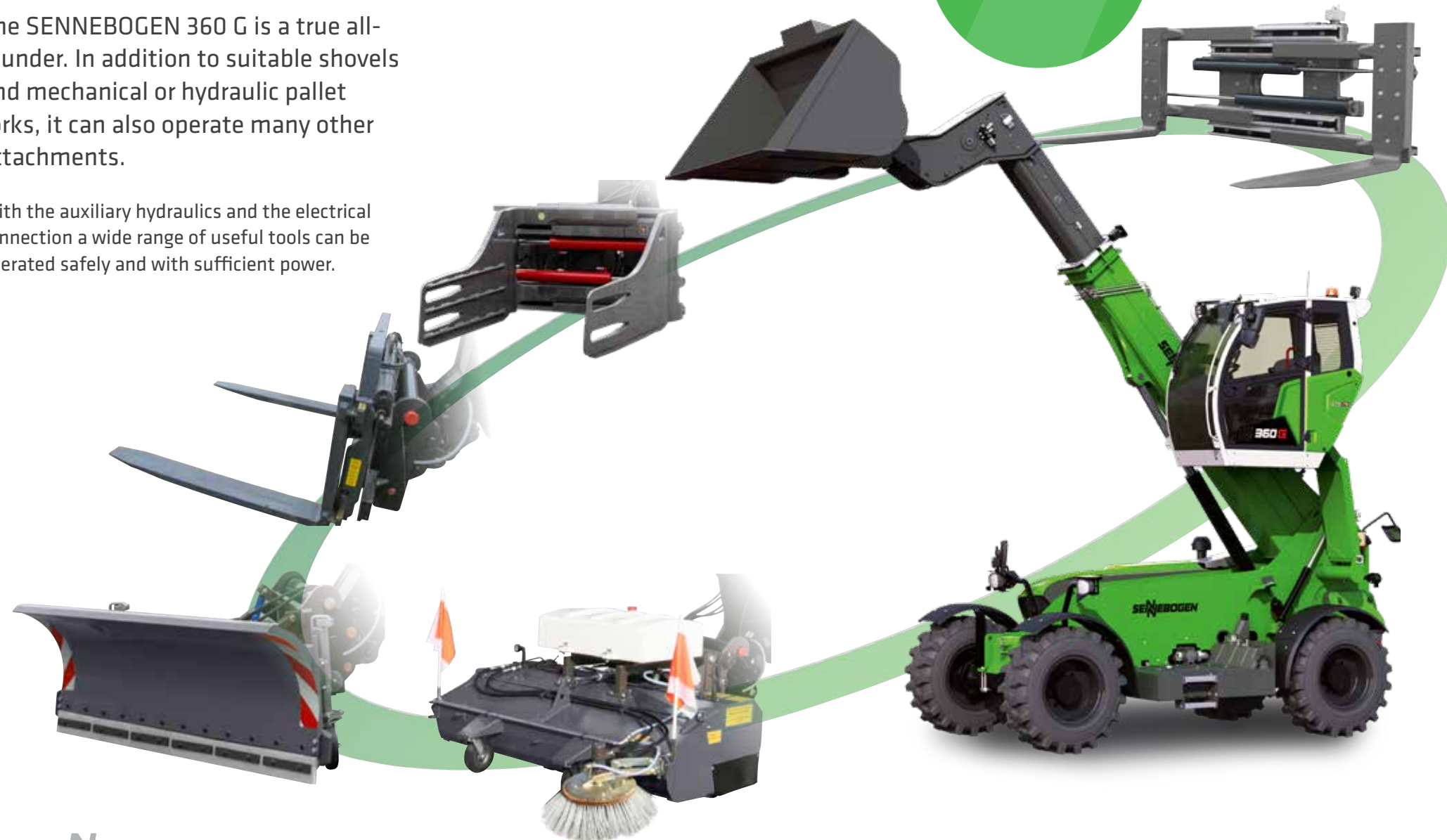


Image shows a selection of possible attachments. Availability on request. Subject to technical changes. Additional options available upon request.

SERVICE: KEEP IT SIMPLE. WITH MANAGEABLE TECHNOLOGY.



10-inch full-graphics touch display



Spacious access to the engine compartment with just one handle. The side plate of the engine nacelle can also be opened.



Our service center offers you comprehensive technical support in the maintenance and repair of your machine – by telephone and on site.

OUR SERVICE PHILOSOPHY.



Reliable and practical technology makes life easier. We rely on hydraulics, electrics and electronics where they are most useful.



We make you happy, not reliant. With cost-effective components and fewer process steps, you can take care of the machine on your own.



The central electrical distributors and electronic modules facilitate maintenance, service and, if necessary troubleshooting.

EXTENDED WARRANTY

SENNEBOGEN guarantees the steel components of the 360 G (in particular the frame and telescopic arm) for **three years** or **10.000 operating hours**, whichever comes first. Talk to your sales partner about this offer!

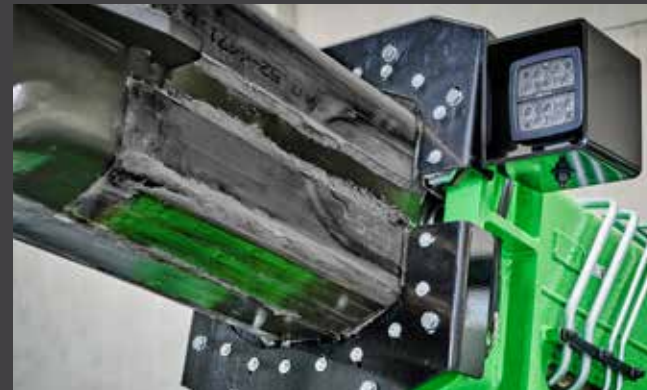
IT'S ALL ABOUT MAINTENANCE. SIMPLE AND UNDERSTANDABLE.



① All service points easy to access thanks to transversely mounted engine.



② Very good access to the cooler thanks to the folding air conditioning condenser.



③ Telescopic boom slide guides are accessible from the outside – easy to maintain and long service life.



④ Spacious access to the engine compartment with just one handle. The side plate of the engine nacelle can also be opened.



⑤ The central lubrication system guarantees an extended service life of the machine through continuous and automated lubrication cycles.



⑥ Best possible access to the control block.



SENNEBOGEN ACADEMY

Increase your knowledge because success is based on knowledge. In the SENNEBOGEN Academy, we place great importance on ensuring knowledge flows powerfully.

➔ www.sennebogen-academy.com



SERVICE AND MAINTENANCE

Comprehensive customer service. And supply of spare parts. Service is a TOP priority for us.

➔ www.sennebogen.com/customer-service



SENtrack

Efficient fleet management with SENtrack: Use information that would otherwise stay hidden and increase your efficiency:

➔ www.sennebogen.com/sentrack



RENTAL & USED

Discover the unique range of rental machines available from SENNEBOGEN Rental & Used. Find your rental machine here:

➔ www.sennebogen-rental-used.com

JOIN OUR OPERATORS' CLUB



The spotlight is on you and your machine! We focus on exclusive information, sharing experiences with other SENNEBOGEN operators as well as fun and enthusiasm.

➔ See all the benefits at

www.sennebogen.com/operators-club



MOVE BIG THINGS – WITH US!



Telehandler
4.0-6.0 t

Balancer
130-300 t

Material handler
17-420 t

Duty cycle crane
13.5-300 t

Crawler crane
50-200 t

Telescopic crane
16-200 t

Port crane
300 t

over **73**
years of experience

100 %
family
company

over **2200**
experienced special-
ists worldwide

over **180**
sales and service partners
around the world

5
production plants
in Germany

over **60**
different
types of machine

This catalog describes machine models, the scope of equipment of individual models, and configuration options (standard equipment and optional equipment) of the machines delivered by SENNEBOGEN Maschinenfabrik GmbH. Machine illustrations may contain optional and supplementary equipment. Actual equipment may vary depending on the country to which the machines are delivered, especially in regard to standard and optional equipment and tolerances. All product designations used may be trademarks of SENNEBOGEN Maschinenfabrik GmbH or other supplying companies, and any use by third parties for their own purposes may violate the rights of the owners.

Please contact your local SENNEBOGEN sales partner for information concerning the equipment variants offered. Requested performance characteristics are only binding if they are expressly stipulated upon conclusion of the contract. Delivery options and technical features are subject to change. All information is supplied without liability. Equipment is subject to change, and rights of advancement are reserved. © SENNEBOGEN Maschinenfabrik GmbH, Straubing, Germany. Reproduction in whole or in part only with written consent of SENNEBOGEN Maschinenfabrik GmbH, Straubing, Germany.



SENNEBOGEN
Maschinenfabrik GmbH
Hebbelstraße 30
94315 Straubing, Germany

➔ www.sennebogen.com

MOVE BIG THINGS

SALES SENNEBOGEN

Multi Line Sales

☎ +49 (0) 9421 / 540 - 547

✉ telehandler@sennebogen.com

SPARE PARTS CENTER

Spare parts orders

✉ spareparts@sennebogen.de

AFTER SALES

Technical support

✉ service@sennebogen.de